

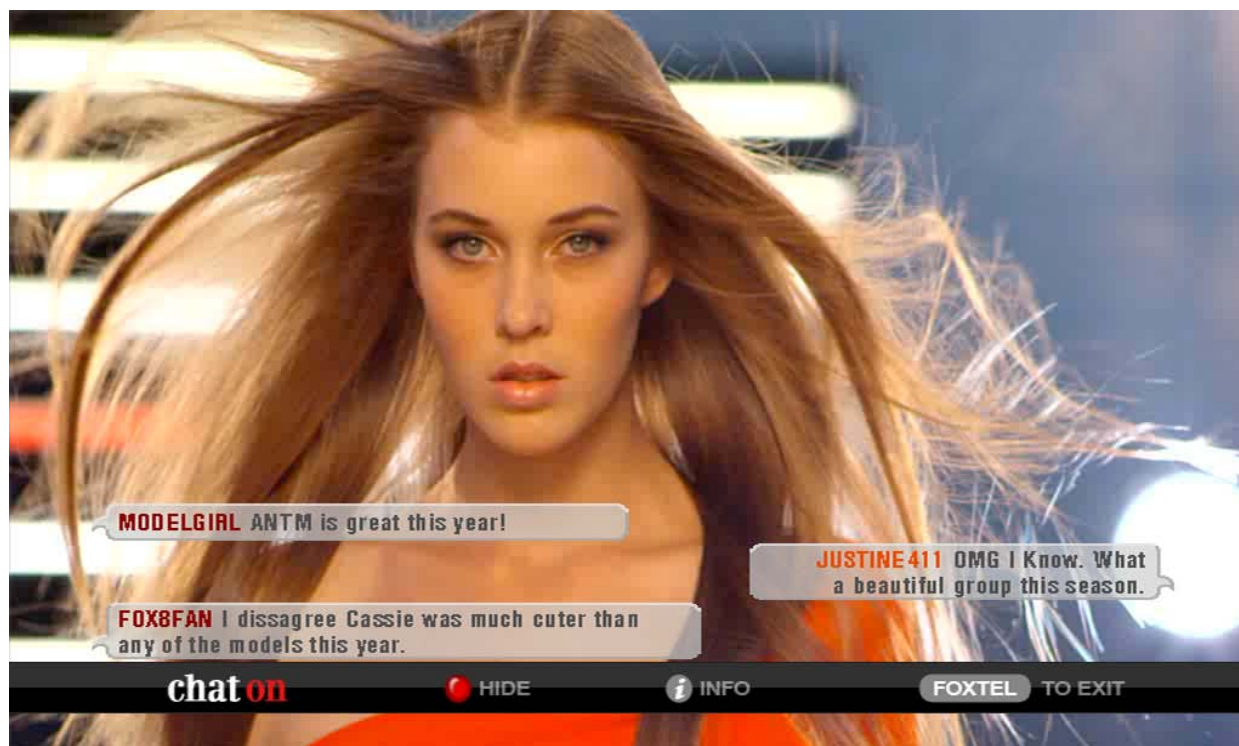
**MEDIA RELEASE**

**27 July 2010**

**“Chat On” Application for  
“Australia’s Next Top Model” Goes Live**

Two Way Limited proudly announces that the “Chat On” application will go live on the popular FOXTEL program “Australia’s Next Top Model” tonight, 27 July 2010, at 7:30pm on FOX8.

The simple-to-use interactive application, developed by Two Way in conjunction with FOXTEL, allows viewers to share their comments with other viewers, and watch them live on the TV screen during the show.



Viewers can choose whether to display or hide the comments at any time, via a simple press of the red button. This gives the viewer full control, unlike other non-interactive services on free-to-air TV, where all viewers must watch the comments that the producers choose to overlay on the broadcast.

“Chat On” continues the tradition established by “Australia’s Next Top Model” of promoting social interaction among its viewers, and enhancing the program via innovative interactive services.

The chat application is available for use by other programs and channels on the FOXTEL platform in the future.

---

For further information:

Ben Reichel  
Chief Executive Officer and Managing Director  
Phone: +612 9017 7000 or 0412 060 281

---

**ABOUT TWO WAY LIMITED (ASX: TTV)**

Two Way creates advanced interactive media and gambling applications. Our competitive strengths include our specialised expertise, patented technology, and library of interactive applications, which can be deployed on TV, mobile or internet.

Two Way has developed an award-winning interactive TV wagering service with Tabcorp Holdings Limited (ASX:TAH) and FOXTEL, which has now been extended to include Racing and Wagering Western Australia (RWWA) and UNiTAB Limited (ASX:TTS). Two Way has the potential to establish similar relationships with other wagering and broadcasting partners throughout Australia and overseas.

Our interactive wagering technology offers advanced betting features and related information, and utilises the latest synchronisation techniques to enhance the user experience. This technology can be applied to both racing and sports betting applications.

Our Way2Bet portal offers an extensive range of information resources to help punters bet better. These services are available via online and mobile platforms at [www.way2bet.com.au](http://www.way2bet.com.au) and way2bet.mobi.

Two Way's products are currently being deployed by leading wagering and interactive TV operators in Australia and New Zealand. Our clients include Tabcorp, RWWA, UNiTAB, FOXTEL, Austar, Optus TV and Sky New Zealand.

To learn more about Two Way visit [www.twowaytv.com.au](http://www.twowaytv.com.au)

---

